



# GAT MONTHLY MEMBERSHIP PROGRESS REPORT

Results as of: 2/28/2023

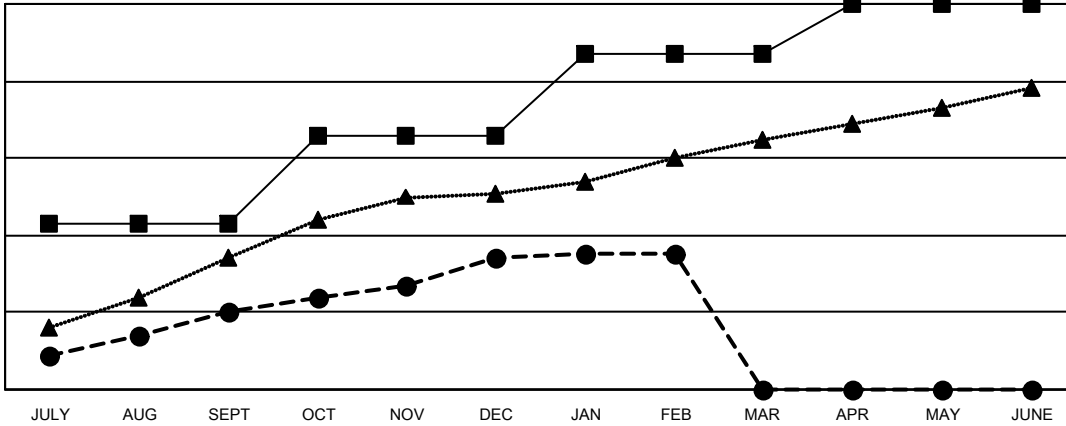
Multiple District 317

LOCATION: INDIA

Clubs			
RESULTS FOR 2022-2023			
QUARTER	NEW CLUB GOAL	NEW CLUBS	DROPPED CLUBS
JULY/AUG/SEPT	43	20	3
OCT/NOV/DEC	23	14	22
JAN/FEB/MAR	21	1	3
APR/MAY/JUNE	13	0	0

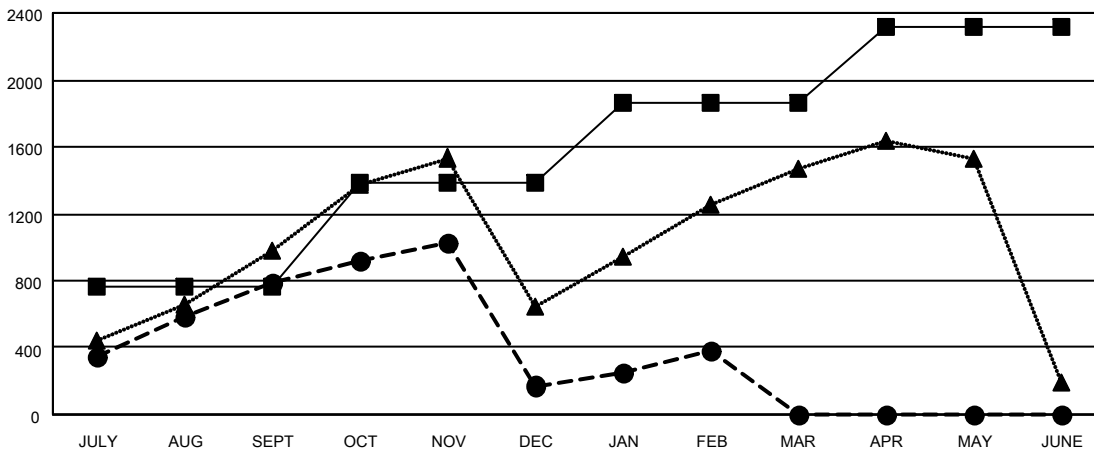
Members			
RESULTS FOR 2022-2023			
QUARTER	MEMBER GROWTH NET GOAL	MEMBER GROWTH ACTUAL	DROPPED MEMBERS ACTUAL (including transfers)
JULY/AUG/SEPT	765	1,240	405
OCT/NOV/DEC	616	812	1,366
JAN/FEB/MAR	477	439	216
APR/MAY/JUNE	463	0	0

GOALS AND ACTUAL NEW CLUBS CUMULATIVE



- CURRENT YEAR GOALS FOR NEW CLUBS
- CURRENT YEAR ACTUAL NEW CLUBS
- ▲- LAST YEAR ACTUAL NEW CLUBS

GOALS AND ACTUAL MEMBERS CUMULATIVE



- MEMBER GROWTH NET GOAL
- MEMBER GROWTH ACTUAL
- ▲- LAST YEAR MEMBERSHIP ACTUAL

DROPPED CLUBS: 28	
<b>DROPPED MEMBERS</b>	
DECEASED	52
CLUB CANCELLED	695
OTHER	1,240
<b>TOTAL</b>	<b>1,987</b>

377 CLUBS OF 703 ADDED 1 OR MORE NEW MEMBERS

[CLICK HERE FOR CUMULATIVE MEMBERSHIP DATA](#)

GENDER DISTRIBUTION	
MALE	15,675 (73.75%)
FEMALE	5,579 (26.25%)
NON BINARY	0 (0.00%)
PREFER NOT TO ANSWER	1 (0.00%)
<b>TOTAL FAMILY UNIT MEMBERS</b>	<b>8,161</b>
<b>FAMILY MEMBERS PAYING HALF DUES</b>	<b>4,491</b>